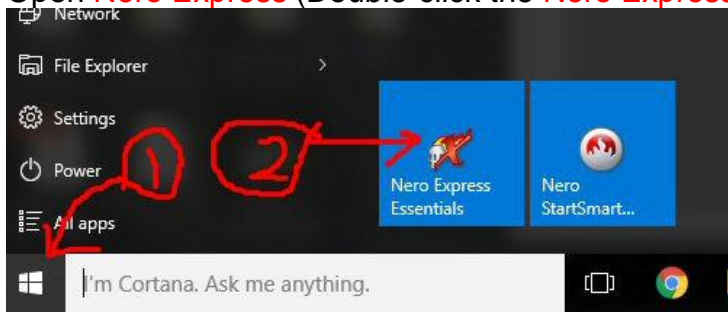
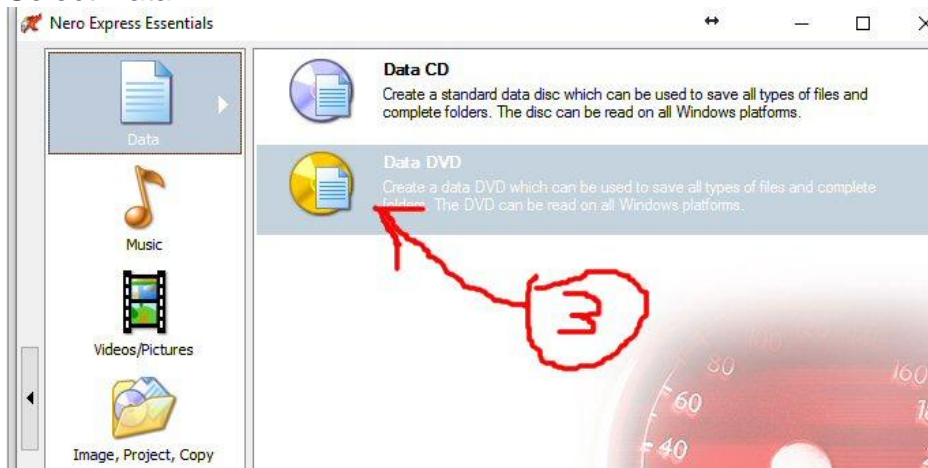


Put a blank DVD in DVD drive first

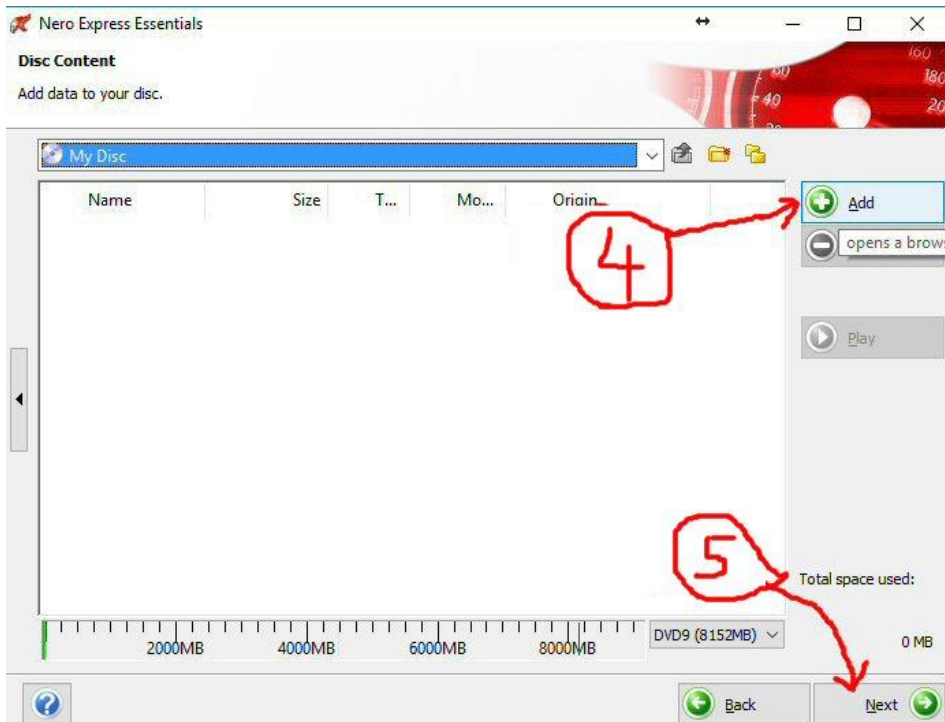
1. Click Start button
2. Open **Nero Express** (Double-click the **Nero Express** icon)



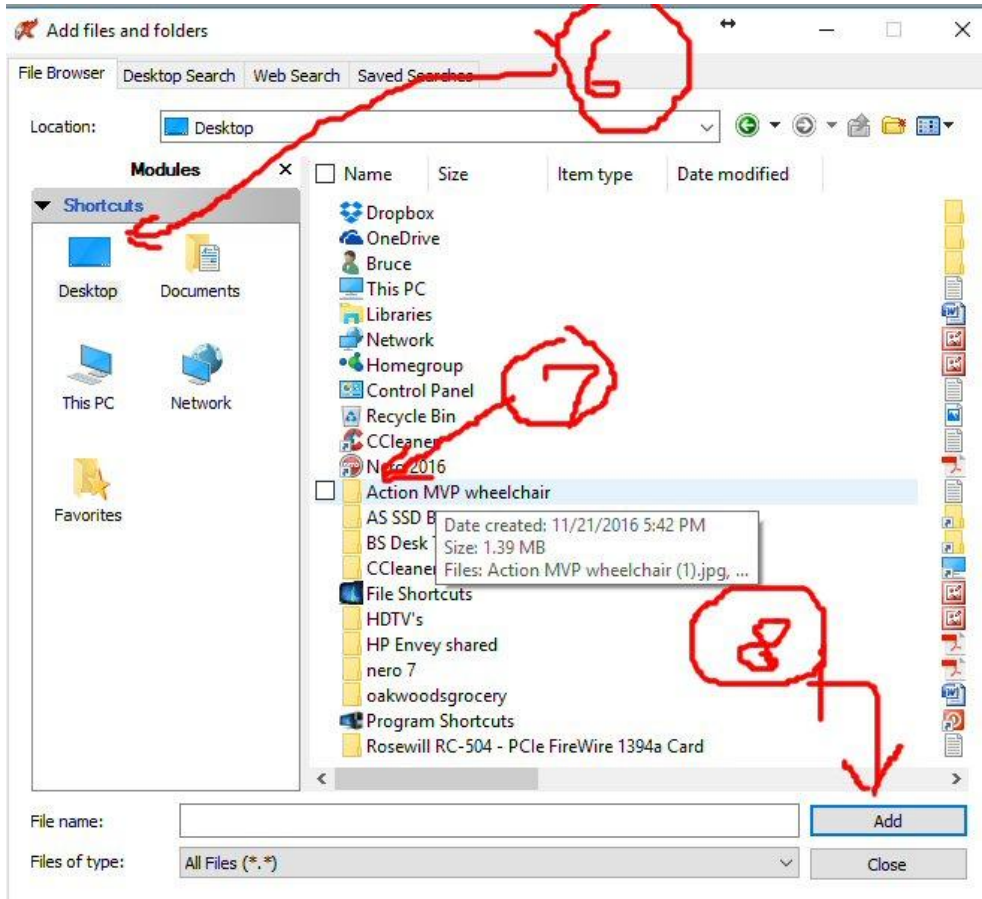
3. Select Data DVD



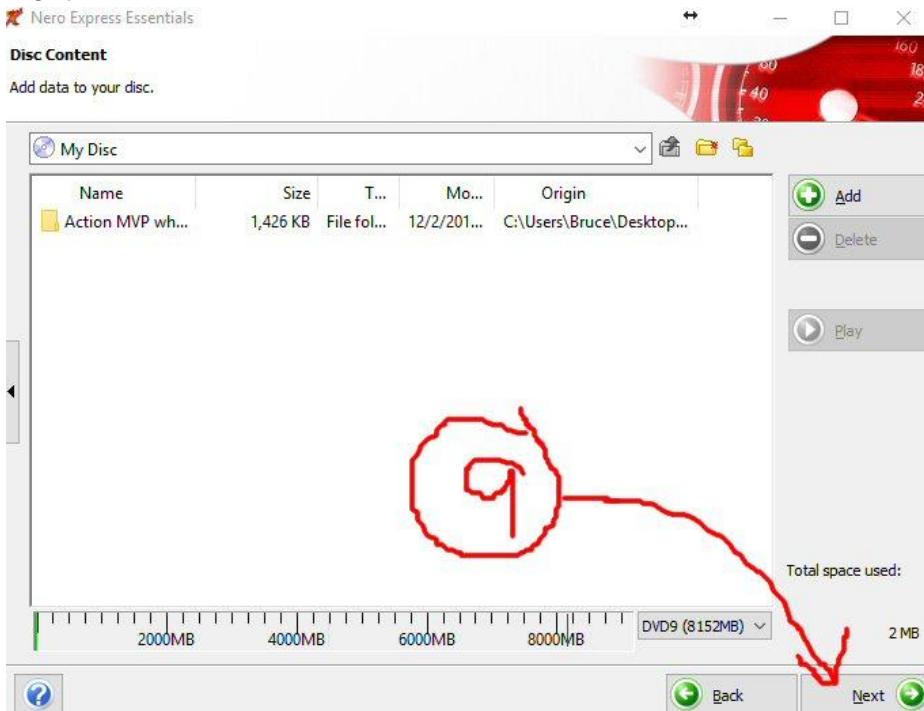
4. Click Add
5. Next



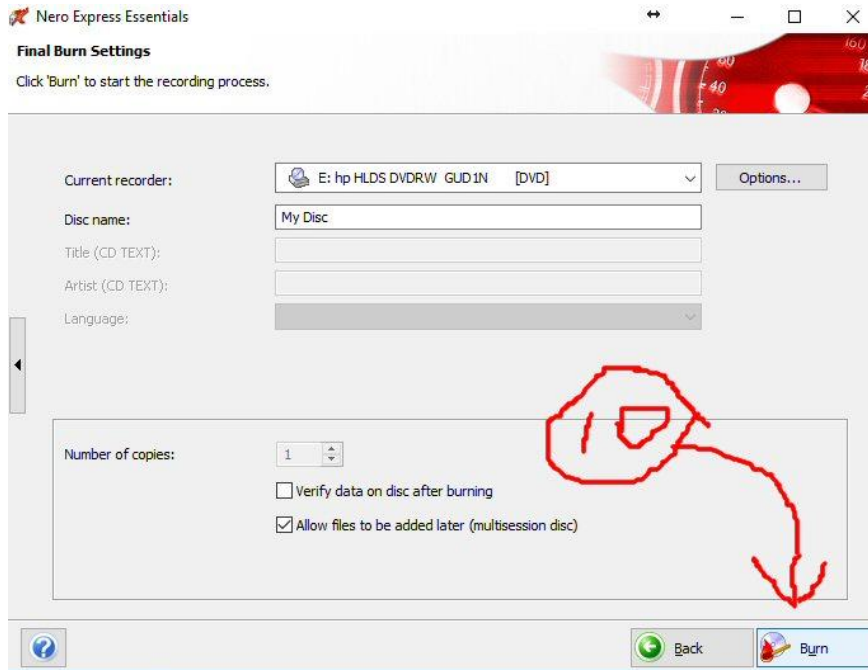
6. Select where file is located
7. Select the file
8. Click Add button



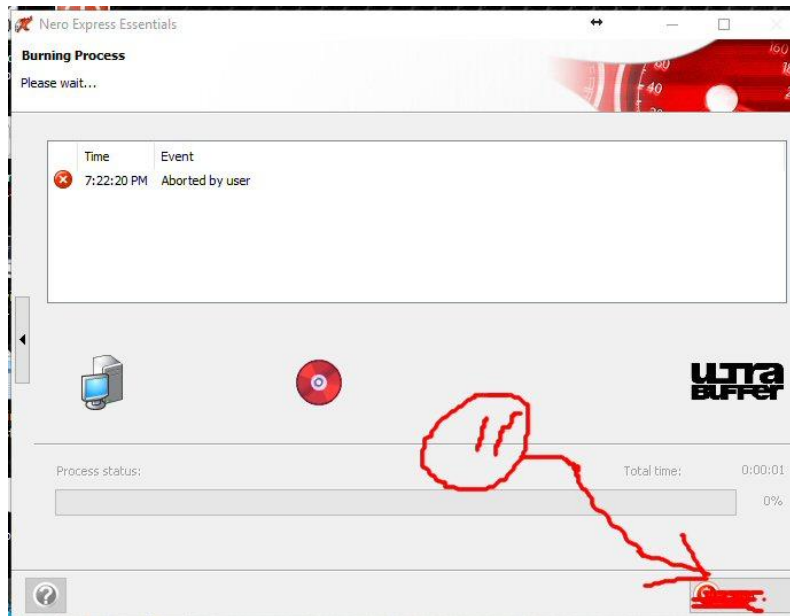
9. Next



10. Burn



11. Next



12. Click No

13. Exit out (click close or the X)

